

Thruvision TAC

Proven people-screening camera that sees any type of item - including metal, plastic, ceramic, gel, liquid, powder and paper - hidden in peoples' clothing at distances of 3 to 10m.

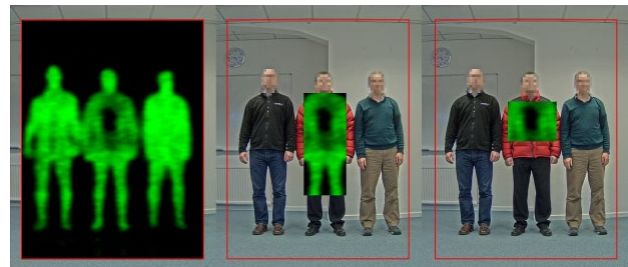
TAC Feature	Benefit
TSA tested	Low risk investment
Detects all types of material	Very high levels of security assurance
Passive screening technology	Safe and respectful
Variable field of view	Increased operational flexibility
Stand-off operation at 3 to 10m	Provides vital decision-making time
Full motion, dual camera video display	Easy and efficient to use
Real-time screening	Capable of high throughput
Small unit size	Allows flexible and discrete deployment



People-screening technology For “stand-off” detection of concealed threat items

- Rail and subway stations
- Airport concourses
- Customs checkpoints
- Public areas

Designed to screen moving people, the TAC is completely safe and non-intrusive, and uses Thruvision's patented terahertz technology.



Images from Thruvision TAC unit showing variable screening camera preset fields of view. Users can also select custom field of view (not shown) anywhere within the red box (called the field of regard)

TAC operational characteristics

- High performance people-screening camera that has passed operational testing with US Transportation Security Administration
- Designed for screening moving people for concealed threat items, as well as stationary subjects
- Minimum object size of 5cm x 5cm (2in x 2in) at 5m (15ft) on stationary person and 35cm x 25cm (14in x 10in) at 8m (24ft) on walking person
- Screening camera operates at 250GHz for optimal clothing penetration and stand-off distance
- User selectable screening field of view, each with different frame rate for maximum operational flexibility
- Indoor, environmentally controlled operation (ambient air temperature less than 28°C / 82°F)
- Local, configurable recording of screening and CCTV cameras
- Integration with standard Video Management Software and Access Control Systems via software developers' kit (SDK)

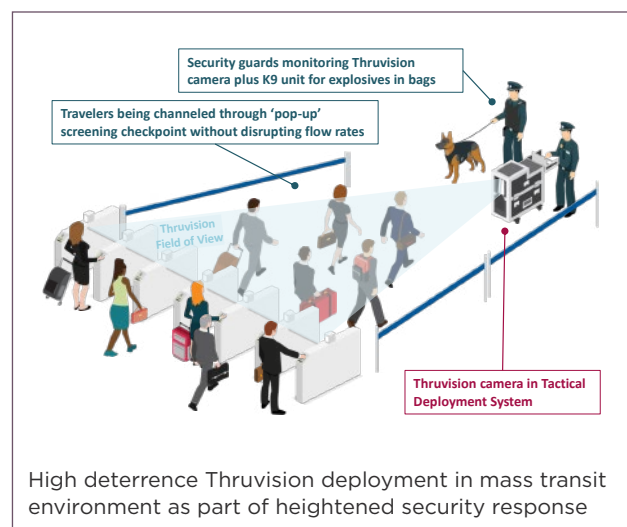
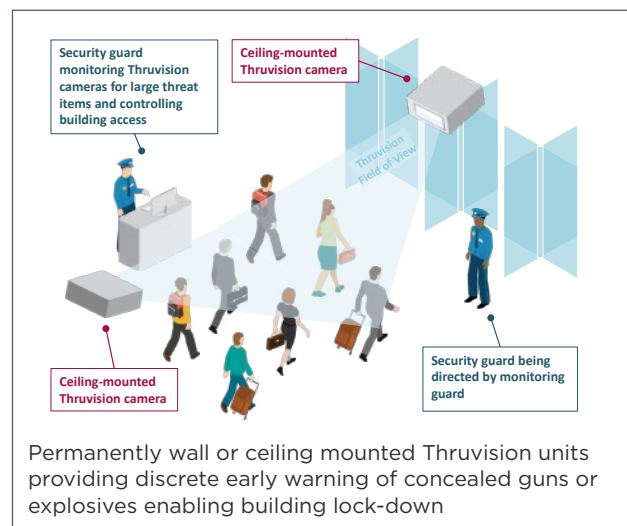
Technical Specification – TAC

Weight:	26kg (57lb)
Power consumption:	130W
Operating voltage:	90V AC to 264V AC, 47 to 63Hz
Mounting options:	Floor stand, wall or ceiling bracket, Mobile Operator Station, Tactical Deployment System
External connections:	Mains AC (power), Ethernet (data)
Dimensions: (h x l x w)	610 x 610 x 254mm, (24.0 x 24.0 x 10.0in)
Ambient air operating temperature:	5°C to 28°C (41°F to 82°F)
Ambient environment:	Indoors, dry and preferably air conditioned location
Relative humidity:	Max 95% RH, non-condensing
Storage temperature:	0°C to 55°C (32°F to 131°F)
Environmental rating:	IP52 (NEMA rating of 5, 12 and 12K)
Screening distance:	3 to 10m (10 to 30ft)
Screening field of view @ 5m (16.4ft) (h x w)	Small: 850 x 370mm (33.5 x 14.6in) Medium: 1530 x 600mm (60.2 x 23.6in) Large: 3500 by 2400mm (137.8 x 94.5in)
Screening camera:	Passive, operating at 250GHz frequency (1.2mm wavelength)
Screening camera frame rate:	Small: 12fps Medium: 6fps Large: 4fps
Optical camera:	Colour HD IP camera
Approvals:	CE, EN55022, EN55024, ETSI EN 300 019-2-2
Power on to operational:	Under 10 mins

PART NUMBER: TV-TAC8
Export restrictions apply



Thruvision TAC stand-off people screening camera with operator laptop mounted on fixed stand. Other deployment options available.



THRUVISION

info@thruvision.com
thruvision.com

UK t: +44 (0) 1235 425400
US t: +1 (540) 878-4844

E&OE. Specifications subject to change without notice.

October 2018 v1.4