

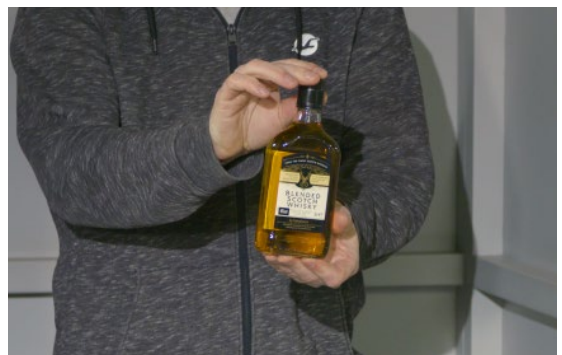
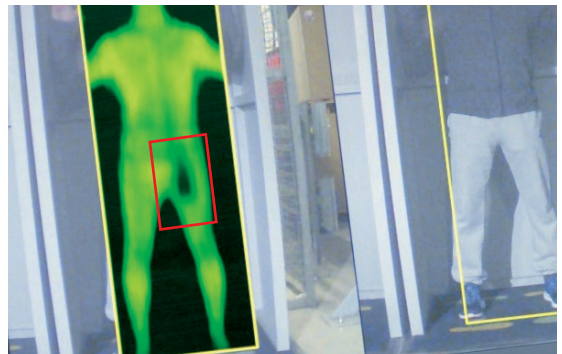
Thruvision TS4-L

Screening staff quickly and safely to detect and deter theft

Proven people security screening technology that detects all types of objects hidden under clothing. Widely deployed in Distribution and Fulfilment Centres globally, Thruvision's technology reduces theft while helping change operational culture.

Key benefits

- ▼ Treat staff with respect - no physical search needed
- ▼ Fast shift exits and high throughput of personnel
- ▼ Effective detection of all items including clothing, liquids, electronics, tobacco, foodstuffs and paper
- ▼ Harmless to employees and completely non-invasive
- ▼ Can be integrated into DC infrastructure or deployed anywhere within 3 minutes



TS4-L on fixed stand

Reliably detects items as small as 7.5cm x 7.5cm

Visualise theft ▼ Protect employees ▼ Change culture

Technical Specification - TS4-L

Weight:	24kg (53lb)
Power consumption:	90W
Operating voltage:	90V AC to 264V AC, 47 to 63Hz
Mounting options:	Floor stand, wall or ceiling bracket, Mobile Operator Station
External connections:	Mains AC (power), Ethernet (data)
Dimensions (h x l x w):	546 x 660 x 210mm (21.5 x 26.0 x 8.4in)
Ambient air operating temperature:	5°C to 28°C (41°F to 82°F)
Ambient environment:	Indoors, dry and preferably air-conditioned location
Relative humidity:	Max 95% RH, non-condensing
Storage temperature:	0°C to 55°C (32°F to 131°F)
Environmental rating:	IP52 (NEMA rating of 5, 12 and 12K)
Screening distance:	3 to 4m (10 to 13ft)
Screening field of view @ 3.5m (h x w):	1.70 x 0.70m (67.0 x 27.6in)
Screening camera:	Passive, operating at 250GHz frequency (1.2mm wavelength)
Screening camera frame rate:	Fixed 4 frames per second
Optical camera:	Colour SD IP video camera
Approvals:	CE, EN55022, EN55024, ETSI EN 300 019-2-2
Power on to operational:	Under 10 mins



TS4-L mounted on Mobile Operator Station



TS4-L mounted on Wall Bracket

PART NUMBER: TV-TS4-L

THRUVISION

info@thruvision.com
thruvision.com

UK t: +44 (0) 1235 425400
US t: +1 (571) 252 7022

AUS t: +61 447 330 004

E&OE. Specifications subject to change without notice.

July 2019 v1.1