

CPC16 Check Point Camera

A completely new approach to the security checkpoint in airports

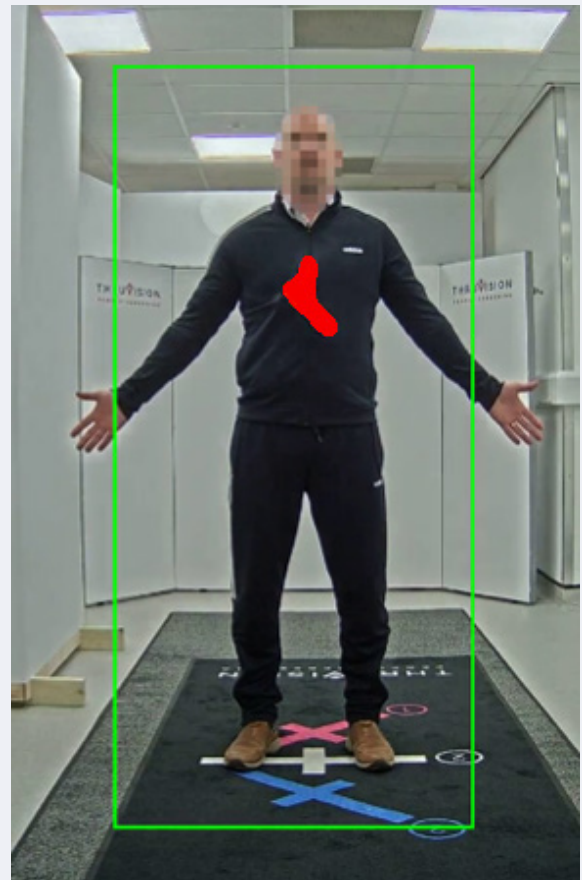
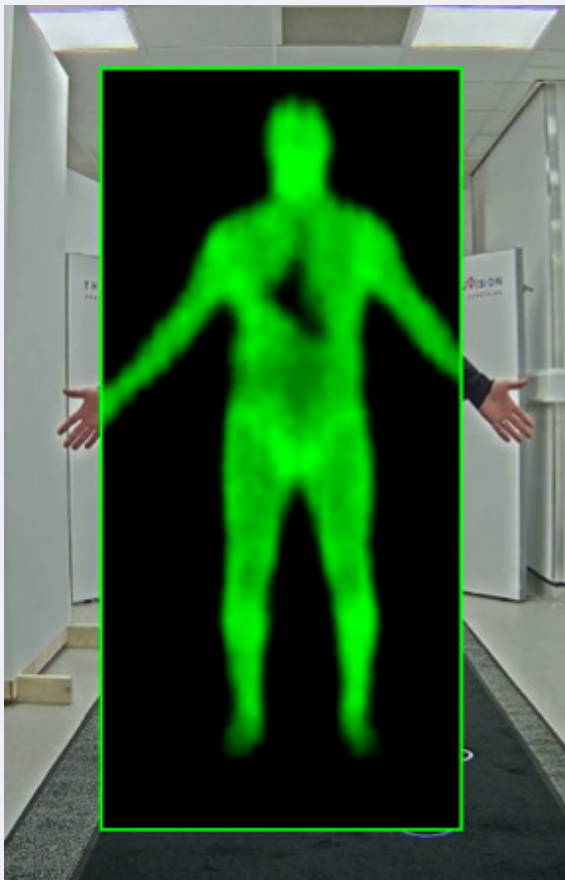
- ▼ Quick and convenient
- ▼ Contactless with no “pat-downs”
- ▼ Completely respectful of privacy
- ▼ Highly effective detection performance



Very high performance camera, designed to meet international aviation security standards

DynamicDetection

Advanced, AI-based concealed item detection designed to meet international aviation security accreditation standards



Easy to understand red overlays show the shape, size and location of concealed items

Technical Specification

Cameras	
CPC16 THz camera:	Passive, very high performance 16-channel sensor, operating at 250 GHz frequency (1.2 mm wavelength)
Screening field of view (h x w), at 3.5 m (11.5 ft)	Fixed 2.1 x 1.2 m (82.7 x 47.2 in)
THz image refresh rate:	24 lines per second
Video camera:	Colour HD IP camera
Optimum screening distance:	3.5 m (11.5 ft) for Primary Screening Lane
Detection performance:	Designed to meet global aviation accreditation standards
Electrical	
Operating voltage:	Rated range 100 to 240 V a.c., 50 to 60 Hz
Power consumption:	140 W
External connections:	Mains a.c. (power), Ethernet (data)
Physical	
Dimensions (h x l x w):	620 x 620 x 253 mm (24.4 x 24.4 x 9.9 in)
Weight:	26 kg (57 lb)
Colour:	Black
Environmentals	
Ambient air operating temperature:	5 to 28 °C (41 to 82 °F)
Optimal ambient air operating temperature:	18 to 22 °C (64 to 72 °F)
Ambient environment:	Indoors, dry and preferably air-conditioned location
Relative humidity:	Max 95% RH, non-condensing
Storage temperature:	0 to 55 °C (32 to 131 °F)
Compute	
External compute platform hardware:	Minimum Intel i7-8700 CPU, NVIDIA RTX 2080 Super GPU, 16 GB dual-channel RAM
External compute platform software:	Microsoft Windows 10 Professional
Approvals and Patents	
Approvals:	CE, UKCA, 47 CFR Part 15B (FCC), EN55032:2015 + A11:2020 (EMC emissions), EN55035:2017 + A11:2020 (EMC immunity), EN IEC 62368-1:2020 + A11:2020 (safety), IEC 62368-1:2018 (safety), UL/CSA 62368-1:2019 (safety), ETSI EN 300 019-2-2 (T2.2 vibration) when transported in original Thruvision packaging
Patents:	See https://www.thruvision.com/patents

PART NUMBER: TV-CPC16



Thruvision benefits

▼ Visualize the threat

Unique Detection-at-Range capabilities, with “DynamicDetection” algorithm, shows concealment size, shape and location to allow rapid decision making without the need for physical pat-down

▼ Safe for everyone

Passive screening technology, safe for everyone including pregnant women and those with medical implants

▼ Respectful of privacy

Cannot distinguish age, ethnicity or gender, and complies with GDPR

▼ Comprehensive security

Detects all types of metallic and non-metallic material



CPC16 on mobile stand



THRUVISION

info@thruvision.com
thruvision.com

UK t: +44 (0) 1235 425400
US t: +1 (540) 878-4844

Follow us on