



LPC7108

LPC7108 is a high performance camera, optimised for SpotCHECK and WalkTHRU, and designed to detect a range of items on stationary people.

FEATURES

SENSOR TECHNOLOGY OPTIMISED FOR SPOTCHECK & WALKTHRU

Features Thruvision's patented high-performance sensor technology, optimised for the screening of stationary people.

SmartSCREEN READY

LPC7108 features built-in hardware support for Thruvision's intelligent SmartSCREEN software feature package.

DynamicDETECT READY

LPC7108 features built-in support for Thruvision's unique AI-based automatic concealed item detection software.

BENEFITS

COMPREHENSIVE SECURITY

Detects all types of metallic and non-metallic materials, including clothing, liquids, electronics, tobacco, foodstuffs and paper.

Shows concealment size, shape and location, in real-time, to allow rapid decision making without the need for physical pat-down.

RESPECTFUL

Cannot distinguish age, ethnicity or gender, and complies with GDPR.

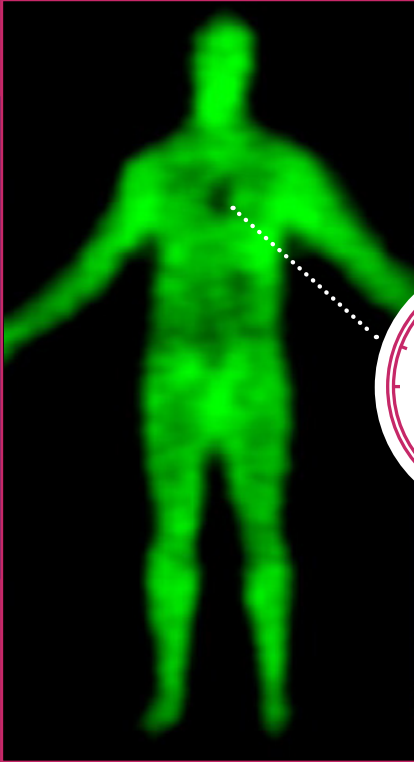
SAFE

Safe for everyone, including pregnant women, children and people with implanted medical devices.

RELIABLE

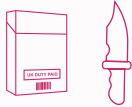
Built in redundancy and resilience supports mission critical operations.





LPC7108 DETECTION CAPABILITY

Image shows 50 x 50 mm metal watch detected on stationary person at 3.5 m distance.

CONCEPT OF OPERATIONS	PEAK FLOW RATE (PEOPLE/HR)	35CL SPIRITS	PACKET CIGARETTES	METAL WATCH	USB PENDRIVE
		9MM HANDGUN	KITCHEN KNIFE	50x50 MM DRUGS	SMALL PENKNIFE
REPRESENTATIVE MINIMUM CONCEALED ITEM SIZE					
SpotCHECK	UP TO 300	LPC7104	LPC7104	LPC7108	LPC7116
WalkTHRU	UP TO 600 (WITH PAUSE)	LPC7104	LPC7108	LPC7116	
WalkTHRU PLUS	600 - 1,200 (NO PAUSE)	LPC7112	LPC7116		
	1,200 - 1,800 (NO PAUSE)	LPC7116			

■ Compatible with DynamicDETECT □ Compatible with SmartSCREEN

TECHNICAL

PHYSICAL

Dimensions	H	610 mm (24.0 in)
	L	625 mm (24.6 in)
	W	253 mm (10.0 in)
Weight		25.2 kg (57 lb)
Colour	Steel Blue RAL 5011	

ELECTRICAL

Operating Voltage	Rated range 100 to 240 V a.c., 50 to 60 Hz	
Power Consumption	130 W	
External Connections	Mains a.c. (power), Ethernet (data)	

APPROVALS & PATENTS

CE, UKCA, 47 CFR Part 15B (FCC)

EMC Emissions: EN 55032:2015 + A11:2020

EMC Immunity: EN 55035:2017 + A11:2020

Safety: EN IEC 62368-1:2020 + A11:2020, IEC 62368-1:2018, UL/CSA 62368-1:2019

Vibration: ETSI EN 300-019-2-2 (T2.2 vibration) when transported in original Thruvision packaging

Patents: See www.thruvision.com/patents for details.

CAMERA SPECIFICATION

Screening Field Of View At 3 M	H	1.8 m (70.9 in)
	W	0.8 m (31.5 in)
Terahertz Sensor	Passive, high performance sensor, operating at 250 GHz frequency	
Terahertz Image Refresh Rate	Up to 14 lines per second, depending on scan mode.	
Video Camera	Colour HD stereo vision depth camera	
Video Camera Frame-Rate	15 fps	
Optimum Screening Distance	2.5 - 3.5 m (8.2 - 11.2ft)	

ENVIRONMENTAL

Ambient Air Operating Temperature	5 - 28°C (41 - 82°F)
Optimum Ambient Air Operating Temperature	18 - 22°C (64 - 72°F)
Storage Temperature	0 - 40 °C (32 - 104°F)
Ambient Environment	Indoors, dry & preferably air-conditioned location
Relative Humidity	Max 95% RH, non-condensing