

# LPC7116

LPC7116 is a very high performance camera, optimised for WalkTHRU Plus screening, and designed to detect smaller items on moving people.

## FEATURES

### ULTIMATE SENSOR TECHNOLOGY

Features ThruVision's patented very high-performance 16-channel sensor technology, combining speed and resolution to give the ultimate screening performance in all ConOps.

### SmartSCREEN READY

LPC7116 features built-in hardware support for ThruVision's intelligent SmartSCREEN software feature package.

### DynamicDETECT READY

LPC7116 features built-in support for ThruVision's automatic concealed item detection software.

## BENEFITS

### COMPREHENSIVE SECURITY

Detects all types of metallic and non-metallic materials, including clothing, liquids, electronics, tobacco, foodstuffs and paper.

Shows concealment size, shape and location, in real-time, to allow rapid decision making without the need for physical pat-down.

### RESPECTFUL

Cannot distinguish age, ethnicity or gender, and complies with GDPR.

### SAFE

Safe for everyone, including pregnant women, children and people with implanted medical devices.

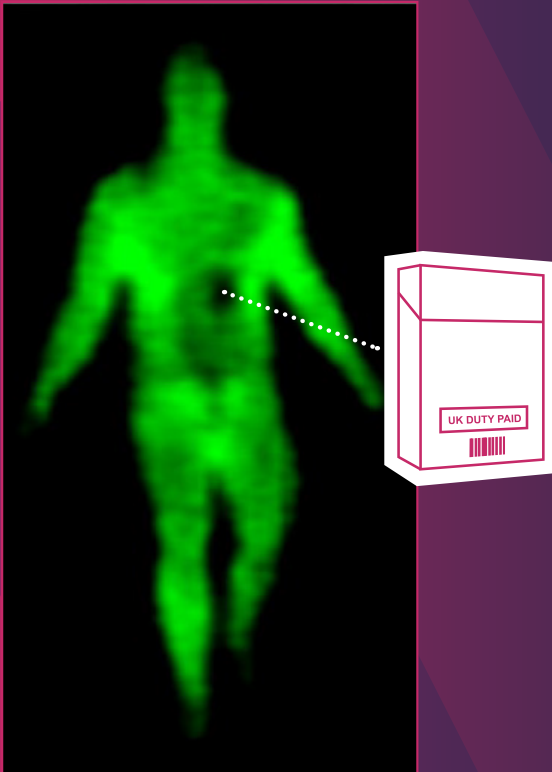
### 100% SCREENING

WalkTHRU capability enables all employees leaving your facility to be screened, eliminating randomised selection processes.

### RELIABLE

Built in redundancy and resilience supports mission critical operations.





## LPC7116 DETECTION CAPABILITY

Image shows packet of cigarettes detected on walking person at 3.5 m distance.

CONCEPT OF OPERATIONS	PEAK FLOW RATE (PEOPLE/HR)	35CL SPIRITS	PACKET CIGARETTES	METAL WATCH	USB PENDRIVE
		9MM HANDGUN	KITCHEN KNIFE	50x50 MM DRUGS	SMALL PENKNIFE
REPRESENTATIVE MINIMUM CONCEALED ITEM SIZE					
SpotCHECK	UP TO 300	LPC7104	LPC7104	LPC7108	LPC7116
WalkTHRU	UP TO 600 (WITH PAUSE)	LPC7104	LPC7108	LPC7116	
WalkTHRU PLUS	600 - 1,200 (NO PAUSE)	LPC7112	LPC7116		
	1,200 - 1,800 (NO PAUSE)	LPC7116			

■ Compatible with DynamicDETECT    ■ Compatible with SmartSCREEN

## TECHNICAL

### PHYSICAL

Dimensions	<b>H</b>	<b>610 mm</b> (24.0 in)
	<b>L</b>	<b>625 mm</b> (24.6 in)
	<b>W</b>	<b>253 mm</b> (10.0 in)
Weight		<b>26.9 kg</b> (59 lb)
Colour	<b>Steel Blue   RAL 5011</b>	

### ELECTRICAL

Operating Voltage	Rated range 100 to 240 V a.c., 50 to 60 Hz	
Power Consumption	140 W	
External Connections	Mains a.c. (power), Ethernet (data)	

### APPROVALS & PATENTS

CE, UKCA, 47 CFR Part 15B (FCC)

**EMC Emissions:** EN 55032:2015 + A11:2020

**EMC Immunity:** EN 55035:2017 + A11:2020

**Safety:** EN IEC 62368-1:2020 + A11:2020, IEC 62368-1:2018, UL/CSA 62368-1:2019

**Vibration:** ETSI EN 300-019-2-2 (T2.2 vibration) when transported in original Thruvision packaging

**Patents:** See [www.thruvision.com/patents](http://www.thruvision.com/patents) for details.

### CAMERA SPECIFICATION

Screening Field Of View At 3 M	<b>H</b>	<b>1.8 m</b> (70.9 in)
	<b>W</b>	<b>1.1 m</b> (43.3 in)
Terahertz Sensor	Passive, very high performance sensor, operating at 250 GHz frequency	
Terahertz Image Refresh Rate	Up to 28 lines per second, depending on scan mode	
Video Camera	Colour HD stereo vision depth camera	
Video Camera Frame-Rate	15 fps	
Optimum Screening Distance	<b>2.5 - 3.5 m</b> (8.2 - 11.2ft)	

### ENVIRONMENTAL

Ambient Air Operating Temperature	<b>5 - 28°C</b> (41 - 82°F)
Optimum Ambient Air Operating Temperature	<b>18 - 22°C</b> (64 - 72°F)
Storage Temperature	<b>0 - 40 °C</b> (32 - 104°F)
Ambient Environment	Indoors, dry & preferably air-conditioned location
Relative Humidity	Max 95% RH, non-condensing