

Thruvision TS4-SC

Proven people-screening camera that sees any type of item - including metal, plastic, ceramic, gel, liquid, powder and paper - hidden in peoples' clothing at distances of 3 to 8m.

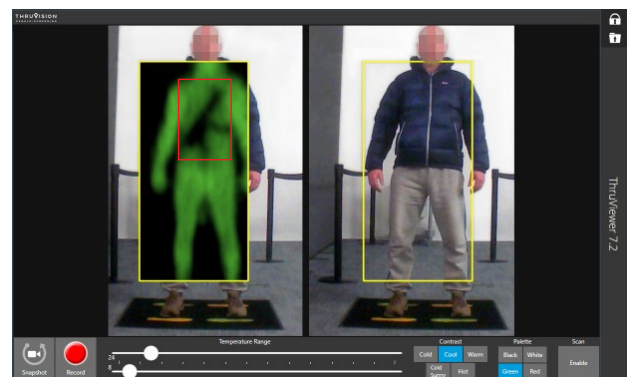
TS4-SC Feature	Benefit
Operationally proven	Low risk investment
Detects all types of material	Very high levels of security assurance
Passive screening technology	Safe and respectful
Stand-off operation at 3 to 8m	Provides vital decision-making time
Full motion, dual camera video display	Easy and efficient to use
Real-time screening	Capable of high throughput
Small unit size	Allows flexible and discreet deployment
Multi-unit configurations	Lower staffing costs



Proven people-screening technology For weapons & explosives detection

- Events and venues
- Rail and subway stations
- Airports
- Concourses, foyers and public areas

Designed to screen moving people, the TS4-SC is completely safe and non-intrusive, and uses Thruvision's patented passive terahertz technology.



Thruvision screening camera allows guard to see concealed automatic weapon under clothing

TS4-SC operational characteristics

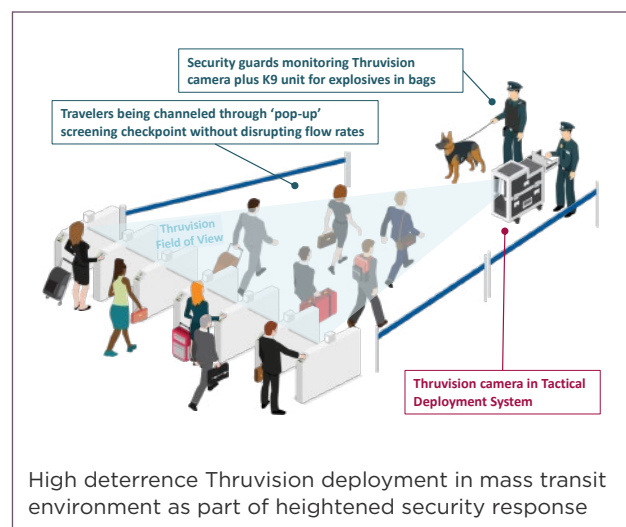
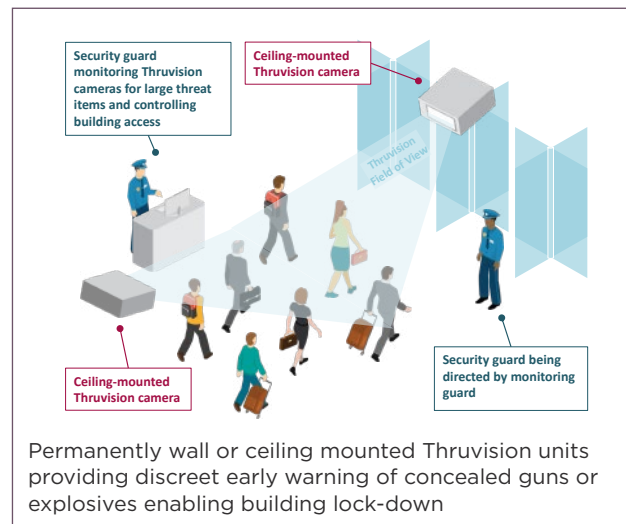
- Full height view of person being screened at 5m distance
- Indoor, environmentally controlled operation (ambient air temperature no higher than 28°C)
- Minimum object size on stationary person of 5cm x 5cm at 6m
- Screening camera operates at 250GHz and 6 frames per second for optimal detection on walking person
- Dual-camera lane achieves throughput of more than 2,000 people per hour for larger concealed items
- "Operator Assist" alarm software to highlight potential hidden items
- Local, configurable recording of screening and CCTV cameras, plus alarms
- Integration with standard Video Management Software and Access Control Systems via software developers' kit (SDK)

Technical Specification - TS4-SC

Weight:	24kg (53lb)
Power consumption:	90W
Operating voltage:	90V AC - 264V AC, 47-63 Hz
Mounting options:	Floor stand, wall or ceiling bracket, Mobile Operator Station
External connections:	Mains AC (power), Ethernet (data)
Dimensions (h x l x w):	546 x 660 x 210mm (21.5 x 26.0 x 8.4in)
Ambient air operating temperature:	5°C to 28°C (41°F to 82°F)
Electronics Operating Temperature:	0°C to 45°C (32°F to 113°F)
Ambient environment:	Indoors, dry and preferably air conditioned location
Relative humidity:	Max 95% RH, non-condensing
Storage temperature:	0°C to 55°C (32°F to 131°F)
Environmental rating:	IP52 (NEMA rating of 5, 12 and 12K)
Screening distance:	3 to 8m (10 to 24ft)
Screening field of view @ 4.5m (h x w):	1.50 x 0.80m (59.0 x 31.5in)
Screening camera:	Passive, operating at 250GHz frequency (1.2mm wavelength)
Screening camera frame rate:	Fixed 6 frames per second
Optical camera type:	Colour SD IP video camera
Approvals:	CE, EN55022, EN55024, ETSI EN 300 019-2-2
Power on to operational:	Under 10 mins



TS4-SC on Mobile Operator Station for easy deployment



PART NUMBER: TV-TS4-SC

THRUVISION

info@thruvision.com
thruvision.com

UK t: +44 (0) 1235 425400
US t: +1 (540) 878-4844

E&OE. Specifications subject to change without notice.

March 2019 v1.4